



HOKKIM
Giving You Control

Control & Protection Relays

Model : DFR-BB

Description : Floatless Relay - Single Tank Control with High & Low Alarms

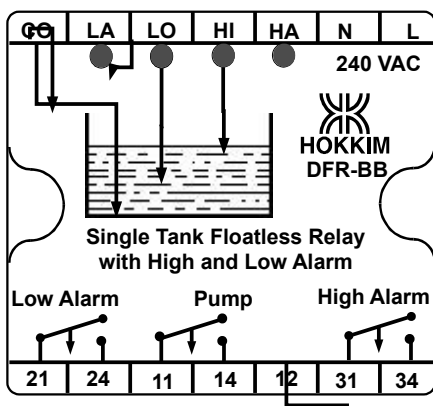
Utilization:

The DFR-BB controls levels of conducting liquids by using 3 probes with 2 additional probes for alarm. When the liquid level reaches probe HI the pump relay actuates, and releases only after the level recedes below probe LO.

If for some reason the level exceeds HI and reaches HA the high alarm relay will energize; or if the level drops below LA, the low alarm relay will energize.

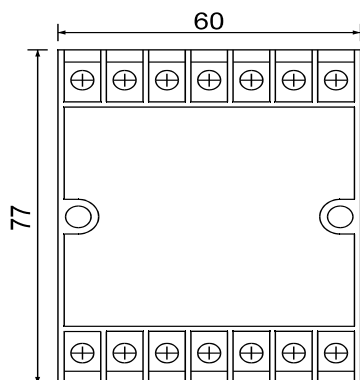
For pump-in operation of tank, connect the starter through contacts 11 & 12.

For pump-out operation of well, connect the starter through contacts 11 & 14.

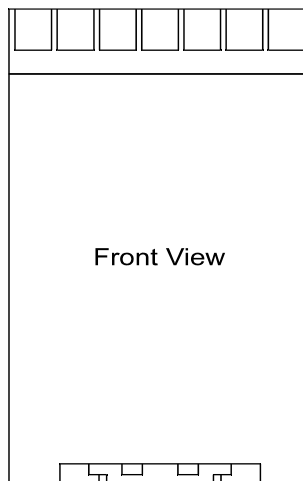


Technical Data

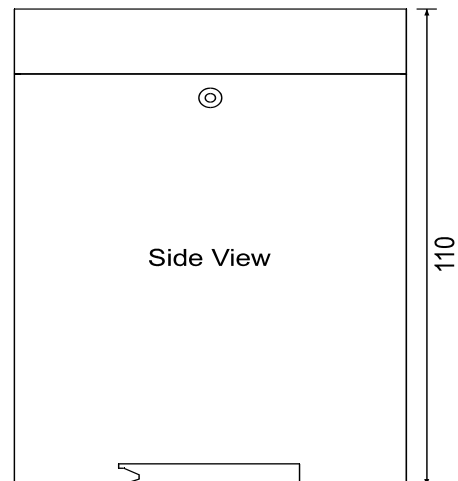
Supply Voltage	: <input type="checkbox"/> 240VAC	<input type="checkbox"/> 115VAC
	<input type="checkbox"/> 24VDC	<input type="checkbox"/> 12VDC
Frequency	: 50/60 Hz	
Consumption	: 2VA	
ON Response Time	: 100 msec.	
OFF Response Time	: 100 msec.	
Sensitivity of Probes	: >50kOhms	
Voltage between Probes	: 24VDC	
Current through Probes	: 250μA	
Indication	: Green LED (Low)	
	Amber LED (High)	
	Red LEDs (Alarms)	
Output Contacts	: 5A 240V 50Hz AC1	
	Relays ON	11-14 Close
		11-12 Open
		21-24 Close
		31-34 Close
	Relays OFF	11-14 Open
		11-12 Close
		21-24 Open
		31-34 Open



Top View
Dimensions in mm



Front View



Side View